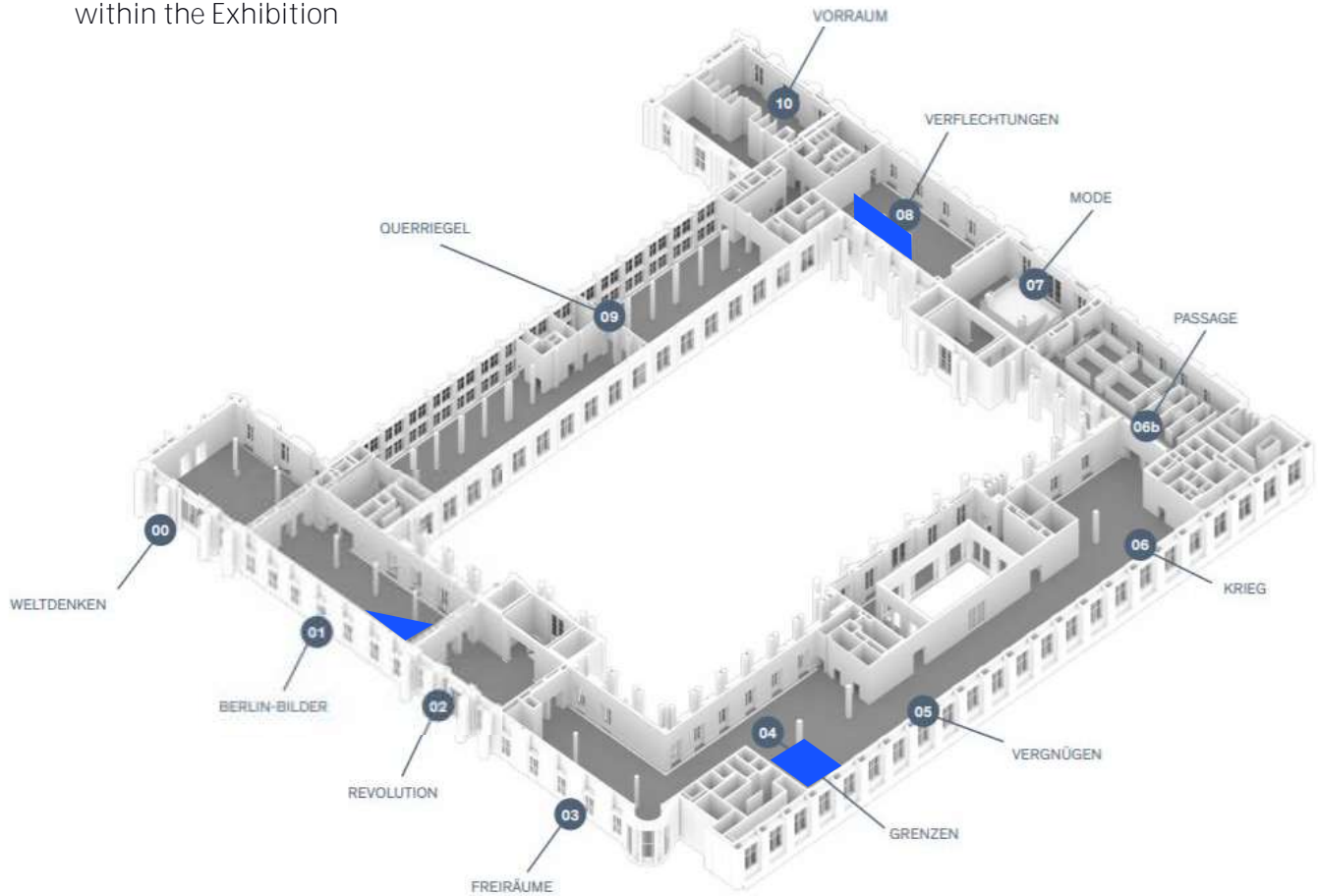


# STADTMUSEUM BERLIN

## Open Spaces in BERLIN GLOBAL

### Plans and photos

Location of the Open Spaces  
within the Exhibition



# STADTMUSEUM BERLIN

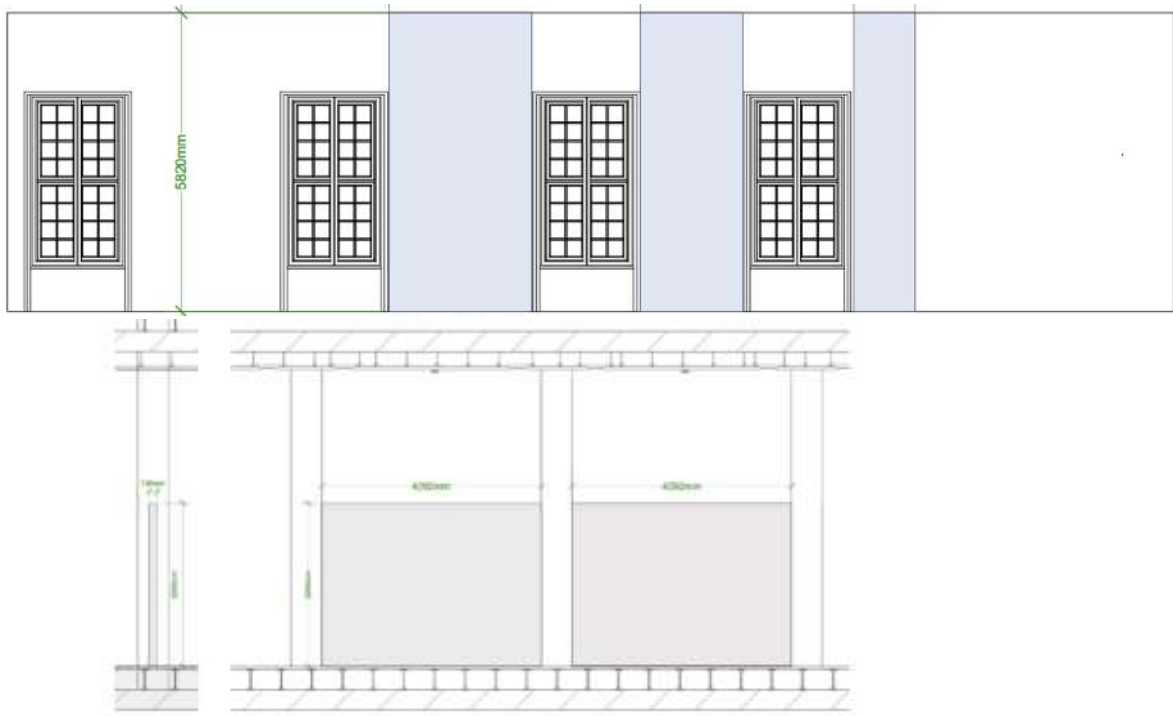
## Open Space A

Exhibition Room: Interconnection

Characteristics: Five sections of wall on two sides of a walkway

Length of wall sections:        Between the windows: 2800 mm, 2000 mm, 1200 mm

Room divider: 4292 mm, 4292 mm



# STADTMUSEUM BERLIN

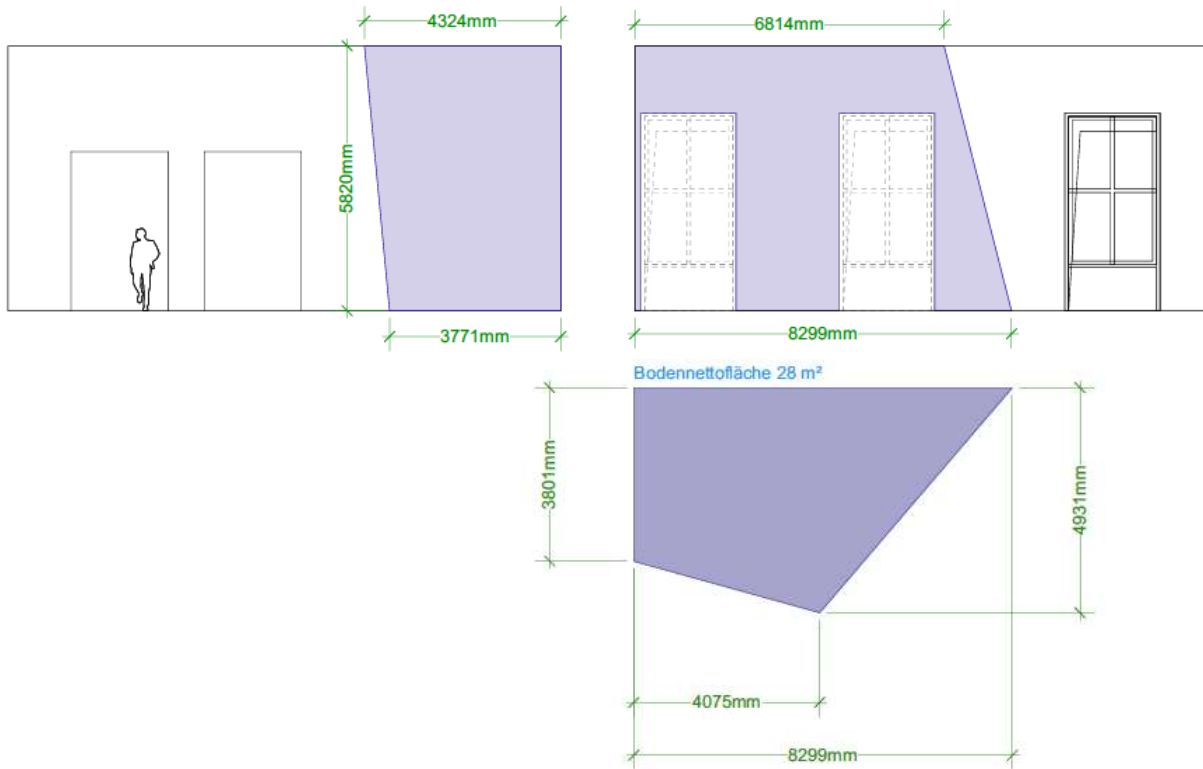
## Open Space B

Exhibition Room: Berlin Images

Characteristics: Three-dimensional space in the corner of the room

Size: 28 m<sup>2</sup>

Hanging truss perpendicular to window wall, max. weight: 750 kg



# STADTMUSEUM BERLIN

## Open Space C

Exhibition Room: Boundaries / Entertainment

Characteristics: Three-dimensional space at the entrance to the room “Entertainment”

Size: 36 m<sup>2</sup>

Hanging truss perpendicular to window wall, max. weight: 750 kg

